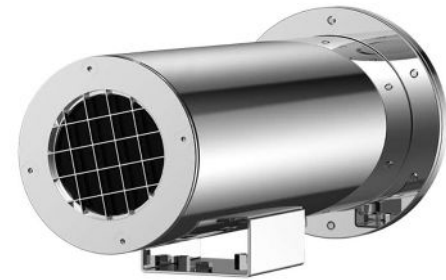


IQV-EX-458-TO Series

EXPLOSION PROOF THERMAL CAMERA

with 640x512 Thermal Imaging, ONVIF Compliant

The IQV-EX-458-TO Series Camera is engineered for reliable thermal monitoring in demanding environments. With 640x512 thermal imaging and advanced heat detection capability, it is ideal for monitoring processes and ensuring reliable detection performance in all lighting conditions, including complete darkness and low-visibility environments. Designed for proactive security, the camera supports advanced functions such as intrusion detection, motion detection, and line crossing detection. It's rugged AISI316L stainless steel housing ensures durability in extreme weather conditions and offers comprehensive protection against dust, water, lightning, and surge, certified to IP66/68/69 standards. Ideal for perimeter defense, industrial safety, and asset protection.



Additional Features

- Certification for Hazardous Areas
- Protection Level of IP66/68/69
- All-Weather 24/7 Thermal Imaging
- Continuous Monitoring in Total Darkness and Low-Visibility conditions
- 640x512 Thermal Resolution
- Motion Detection, Line Crossing Detection, Regional Intrusion Detection
- ONVIF Compatibility



TECHNICAL INFORMATION

GENERAL & MECHANICAL	
Ambient Temperature	-40°C to +60°C
Ingress Protection	IP66, IP68 (2m, 2h) & IP69
Operating Voltages	AC 100-240V / AC 24V (50/60Hz); DC 24V / DC 12V / PoE++ (48V DC); ≤ 2A
Power Consumption	≤15W
Surge Protection	TVS 6000V Lightning and Surge Protection
Material	AISI316L Stainless Steel
Finishing	Optional: Electro-polished / Painting
Relative Humidity	≤95%
Mounting Options	Wall mount / Pole mount / Top pole mount
Dimensions (W x D x H)	Kindly refer to individual dimensions for each model.
Weight	Approximately 11 kg / 24.25 lbs
Cable Gland Entries	M25x1.5, M27x1.25, M20x1.5, M32x1.5

CERTIFICATIONS & RATINGS	
Code	II 2 G Ex db IIC T6 Gb II 2 D Ex tb IIIC T80°C Db
IECEx Standards	IEC60079-0, IEC60079-1, IEC60079-31
ATEX	EN60079-0, EN60079-1, EN60079-31
NETWORK	
Interface	RJ45 10Base-T/100Base-TX
ONVIF	ONVIF (Profile S, Profile G)
Protocols	HTTP, RTSP, ONVIF
Security	Password Protection, HTTPS Encryption, IEEE 802.1X Network Access Control, IP Address Filtering, MAC Address Binding

IQV-EX-458-TO Series

EXPLOSION PROOF THERMAL CAMERA

TECHNICAL INFORMATION

THERMAL CAMERA	
Image Sensor	Vanadium Oxide Uncooled FPA
Resolution	640x512 pixels
Frame Rate	Main Stream: 640x512 at 50Hz
Spectral Range	8~14 μ m
Pixel Pitch	17 μ m
NETD	≤ 40 mK (@F1.0, 300K)
NUC	Auto/Manual/Scheduled
Digital Zoom	16x
Focus Mode	Auto/Manual
Focal Length	25mm
Field of View (FOV)	24.6° × 18.5°
Color Palettes	14 Modes
Image Enhancement	Yes
Noise Reduction	Yes
Video Compression	H.265/H.264
Storage	Built-in Storage
Alarm I/O	1 Input / 1 Output
Smart Analytic	Line Crossing, Area Intrusion, Motion Detection, Network Loss Detection, IP Conflict Notification, Storage Capacity Alert, Storage Fault Alert

LENS SELECTION (DRI PERFORMANCE)				
Lens	FOV (H × V) [°]	Detect	Recognize	Identify
19mm	32° × 24.2°	900.0m	300.0m	150.0m
25mm	24.6° × 18.5°	1200.0m	400.0m	200.0m
ACCESSORIES				
Enclosures	Explosion-proof Ex d Stainless Steel IP67 Control Box (various)			
Glands	Explosion-proof Ex d Stainless Steel Cable Gland (various)			
Conduit	Ex e Ex d IP66 IP67 Flexible Conduit (various)			
Washer	Explosion-proof Self-Washing System			
Composite	Optical, Power, LAN, Instrumentations (various)			